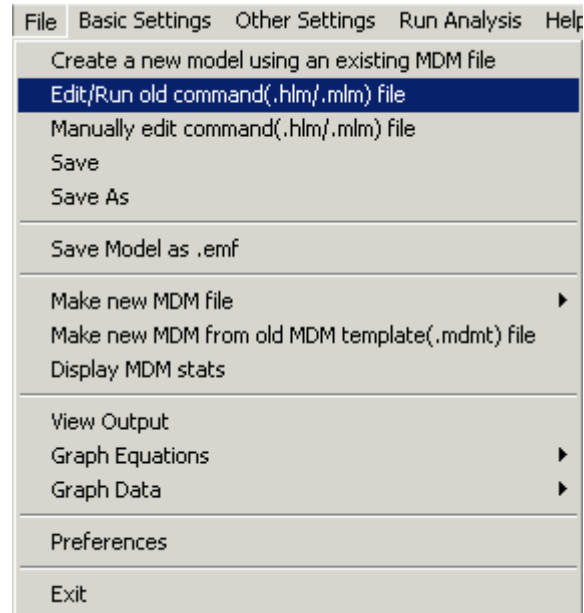
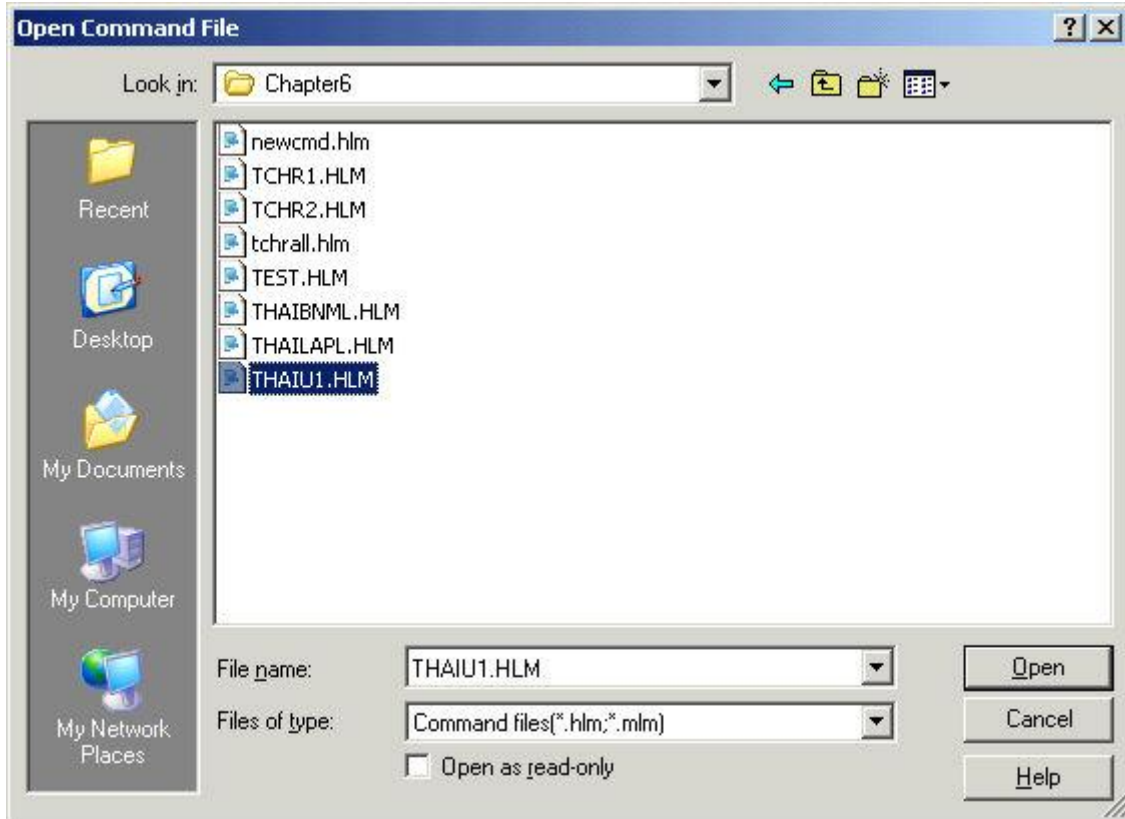


Construct the MLM file using an old HLM/MLM command file

To construct a MLM file from an existing HLM/MLM file of the same data, open the **File** menu from the **WHLM** main window, select **Edit/Run old command (.hlm/.mlm) file** option to open the **Open Command File** dialog box.



Browse to select the HLM/MLM file and open it.



The model defined by the file will be shown in the WHLM main window. Modify the model specifications by following the rules specified for the desired model. The reestablished model then can be saved by the following steps:

1. Open the **File** menu from the WHLM main window, choose **Save As** to open a **Save command file** dialog box.
2. Enter a command file name (for example, **hsb1.mlm**).